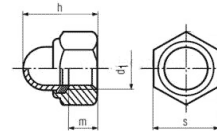


## DIN 986 Nyloc Insert Dome Nuts



DIN 986 Nyloc Insert Dome Nuts							
Diameter-d1	M4	M5	M6	M8	M10	M12	M16
A/F - s	7	8	10	13	17	19	24
Thread Depth-m	2.9	4.4	4.9	6.44	8.04	10.37	14.1
Overall Height-h	9.6	10.5	12	14	18	22.5	27.5

Material	
<i>Steel</i>	<i>Zinc (CR3)</i>
<i>Stainless Steel</i>	<i>A2</i>

INFORMATION AND DRAWINGS PROVIDED ARE FOR REFERENCE ONLY